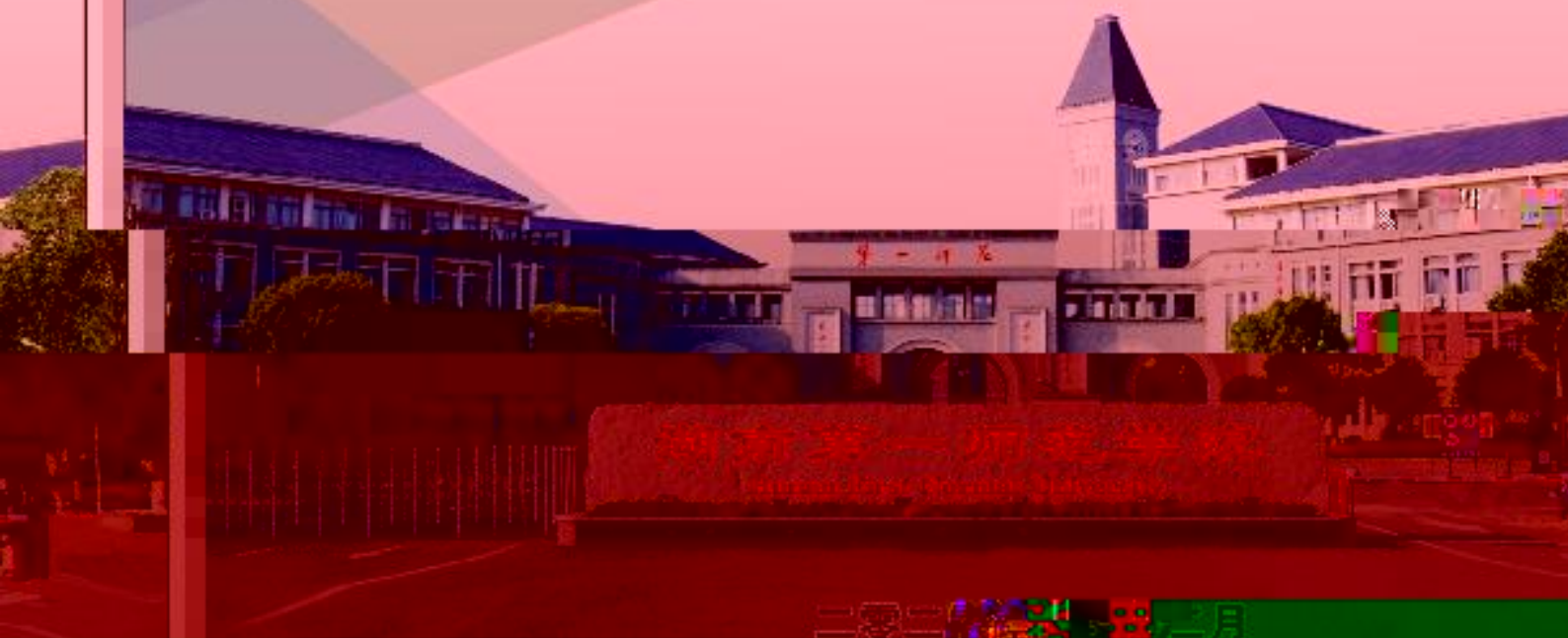




湖南第一师范学院
Hunan First Normal University

2020届毕业生

就业质量年度报告



2020年3月

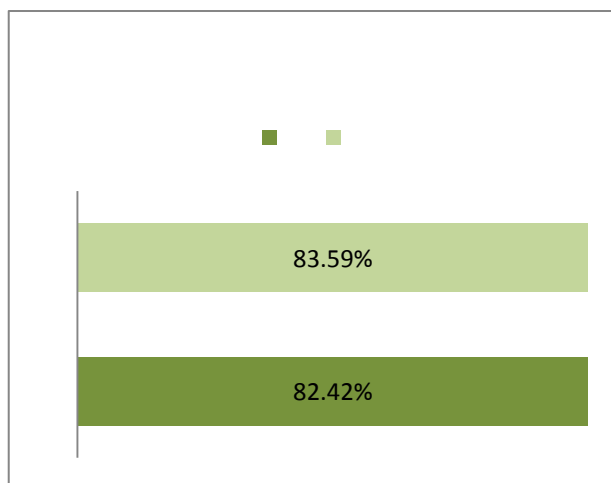
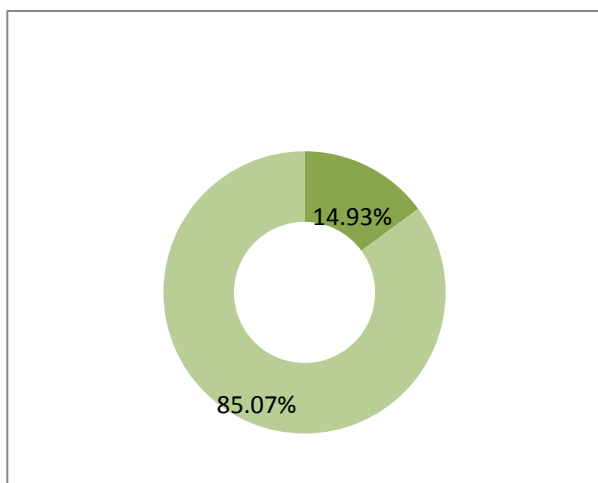
.....	1
.....	4
.....	4
.....	4
.....	4
.....	6
.....	6
.....	7
.....	8
.....	10
.....	10
.....	11
1.	11
2.	

	22
1.	22
2.	22
3.	23
	25
	25
	25
	26
	28
	29
	“ ”	29
	“ ”	29
	“ ”	29
	“ ”	30
	32
	32
1.	32
2.	33
	34
1.	34
2.	2020	34
	37



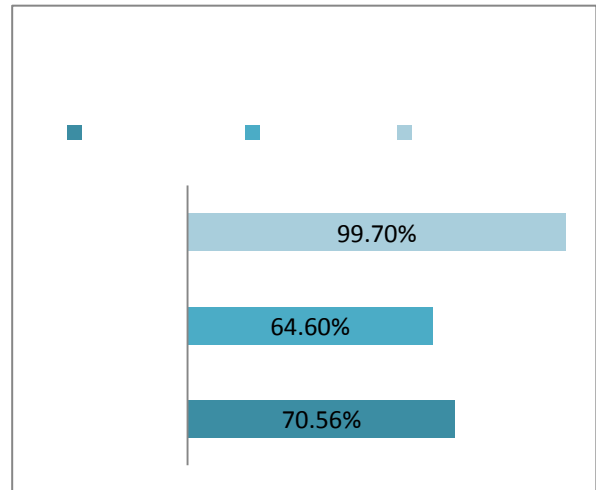
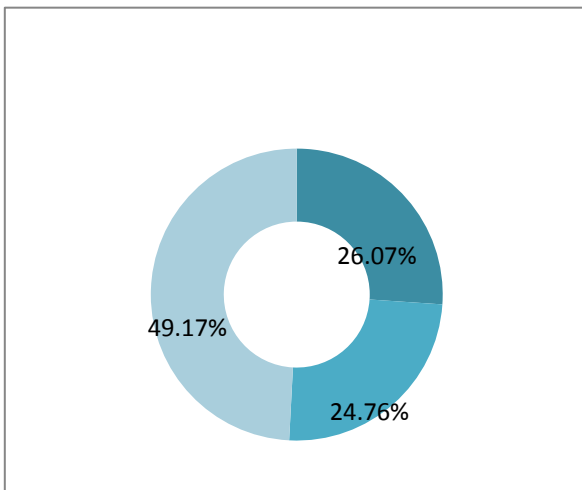
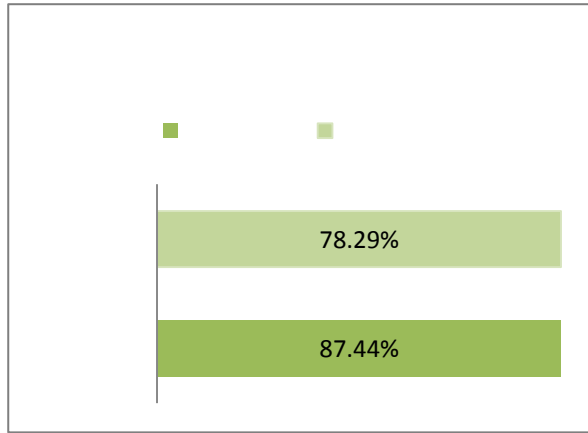
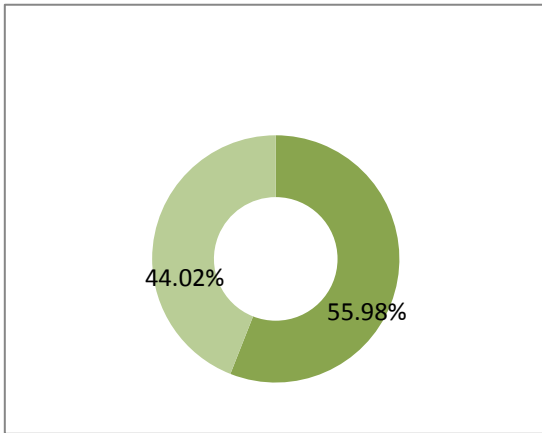
2020





2020

	3553	87.97%	2949	83.00%
	13	0.32%	8	61.54%
	106	2.62%	97	91.51%
	6	0.15%	5	83.33%
	2	0.05%	1	50.00%
	10	0.25%	5	50.00%
	42	1.04%	40	95.24%
	76	1.88%	73	96.05%
	11	0.27%	9	81.82%
	215	5.32%	178	82.79%
	3	0.07%	3	100.00%
	1	0.02%	1	100.00%
	1	0.02%		0.00%
	4039	100.00%	3369	83.41%



2020

		4039	3369	83.41%
		2053	1389	67.66%
		828	780	94.20%
		497	497	100.00%
		151	151	100.00%
		46	42	91.30%
		96	67	69.79%
		38	23	60.53%
		586	516	88.05%
		348	344	98.85%
		109	76	69.72%
		49	40	81.63%
		39	29	74.36%
		41	27	65.85%
		457	424	92.78%
		341	339	99.41%
		81	58	71.60%
		35	27	77.14%
		509	376	73.87%
		200	200	100.00%
		231	136	58.87%
		48	24	50%
		30	16	53.33%
		256	222	86.72%
		99	99	100.00%
		39	35	89.74%

2020

2020				
	18	0.45%	13	72.22%
	21	0.52%	10	47.62%



1.

2020

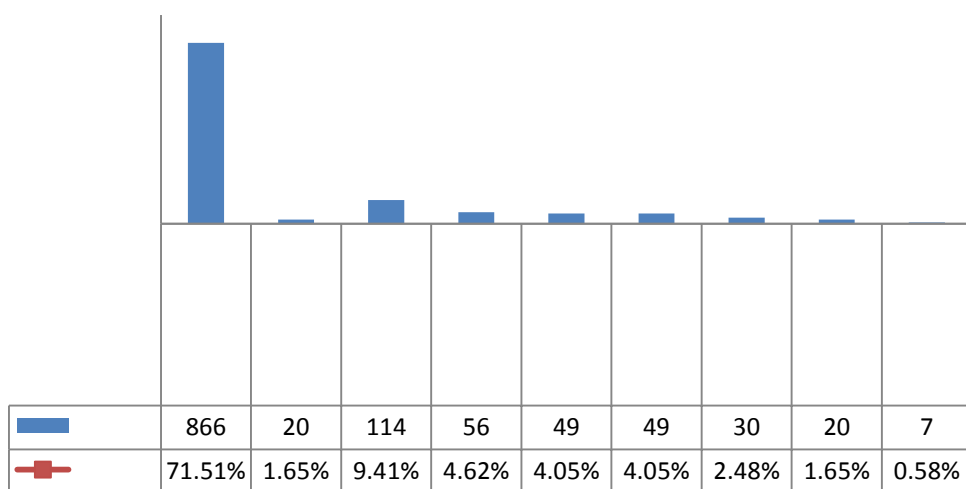
	3	0.40%	3	0.46%	6	0.43%
	3	0.40%	1	0.15%	4	0.29%
	348	46.84%	71	10.99%	419	30.17%
	8	1.08%	14	2.17%	22	1.58%
	2	0.27%	16	2.48%	18	1.30%
		0.00%	8	1.24%	8	0.58%
	192	25.84%	374	57.89%	566	40.75%
	4	0.54%	6	0.93%	10	0.72%
	35	4.71%	17	2.63%	52	3.74%
	1	0.13%		0.00%	1	0.07%
	2	0.27%	1	0.15%	3	0.22%
	8	1.08%	9	1.39%	17	1.22%
	38	5.11%	47	7.28%	85	6.12%
	95	12.79%	76	11.76%	171	12.31%
	4	0.54%	3	0.46%	7	0.50%
	743	100.00%	646	100.00%	1389	100.00%

2.

2020

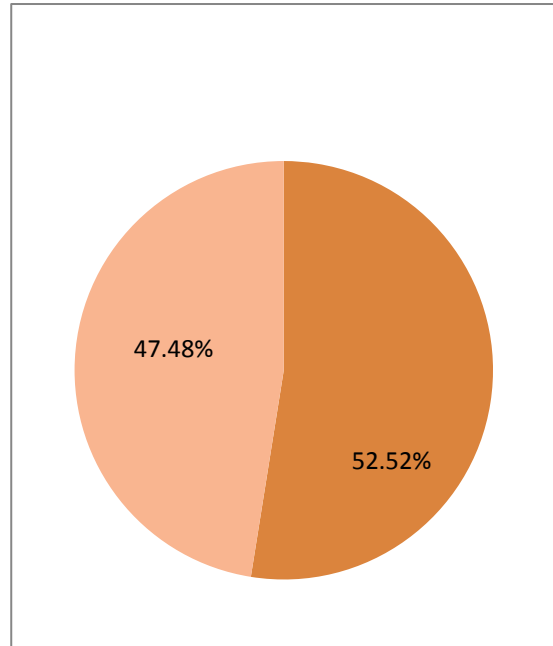
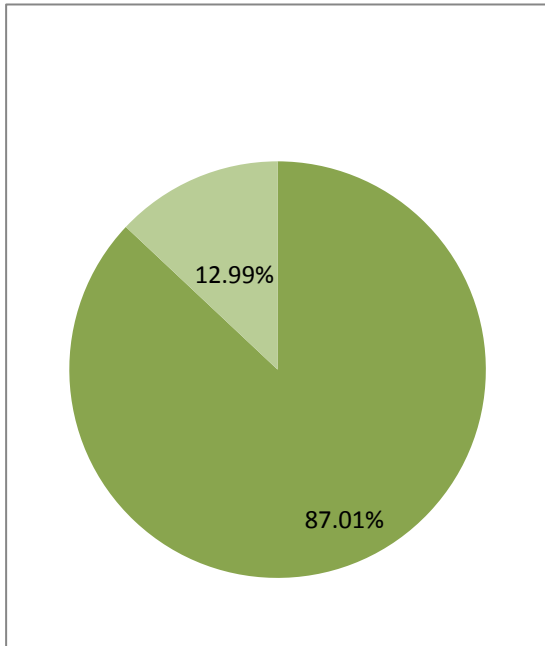
	1	0.13%	3	0.46%	4	0.29%
		0.00%	19	2.94%	19	1.37%
		0.00%	1	0.15%	1	0.07%
	4	0.54%	21	3.25%	25	1.80%
	2	0.27%	27	4.18%	29	2.09%
		0.00%	3	0.46%	3	0.22%
	5	0.67%	17	2.63%	22	1.58%
	9	1.21%	64	9.91%	73	5.26%
	2	0.27%	11	1.70%	13	0.94%
	3	0.40%	11	1.70%	14	1.01%
	7	0.94%	32	4.95%	39	2.81%
	1	0.13%	13	2.01%	14	1.01%
		0.00%	2	0.31%	2	0.14%
	6	0.81%	6	0.93%	12	0.86%
	521	70.12%	205	31.73%	726	52.27%
		0.00%	5	0.77%	5	0.36%
	33	4.44%	62	9.60%	95	6.84%
	7	0.94%	11	1.70%	18	1.30%
	5	0.67%	7	1.08%	12	0.86%
	38	5.11%	47	7.28%	85	6.12%
	95	12.79%	76	11.76%	171	12.31%
	4	0.54%	3	0.46%	7	0.50%
	743	100.00%	646	100.00%	1389	100.00%

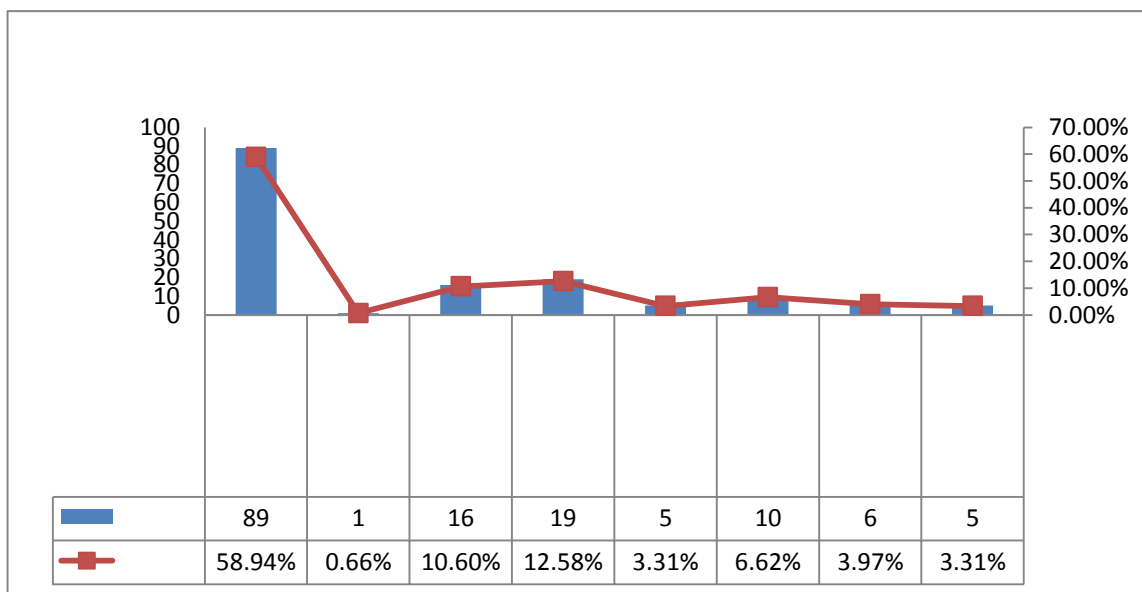
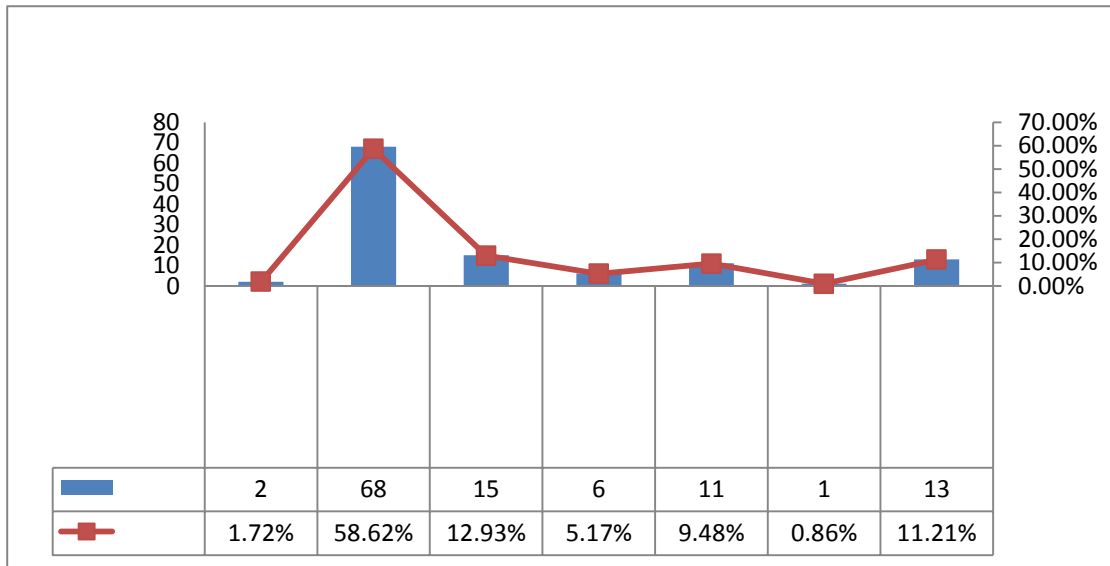
3.



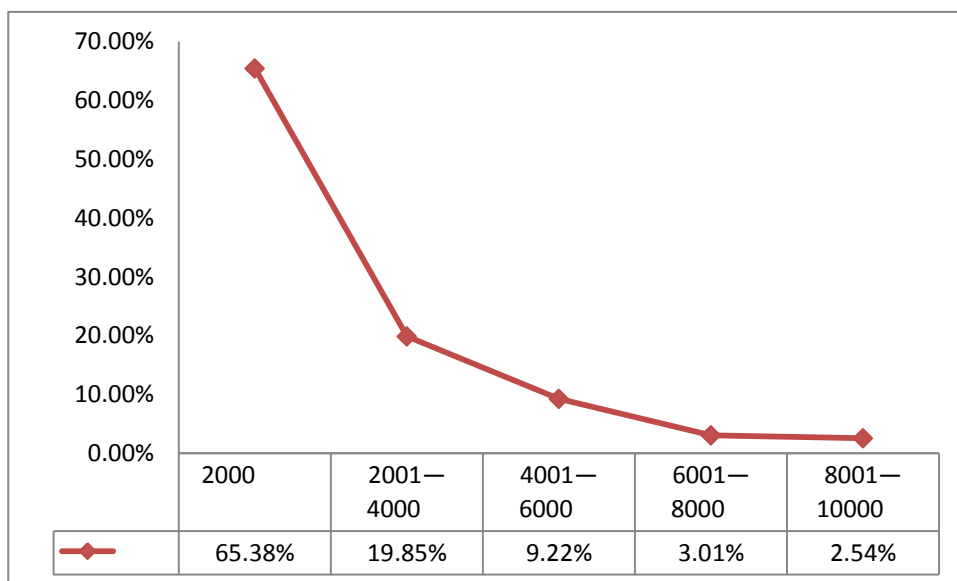
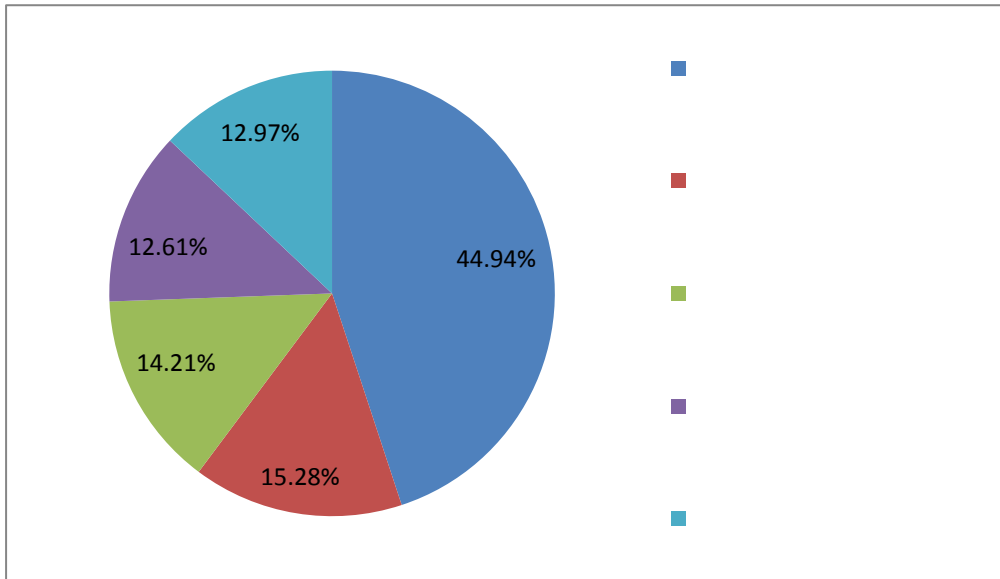
4.

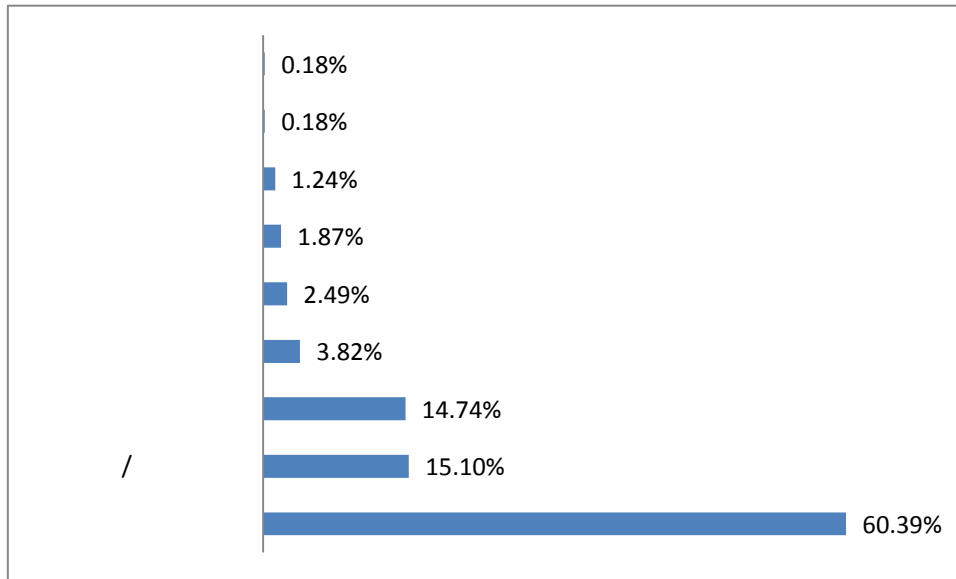
-



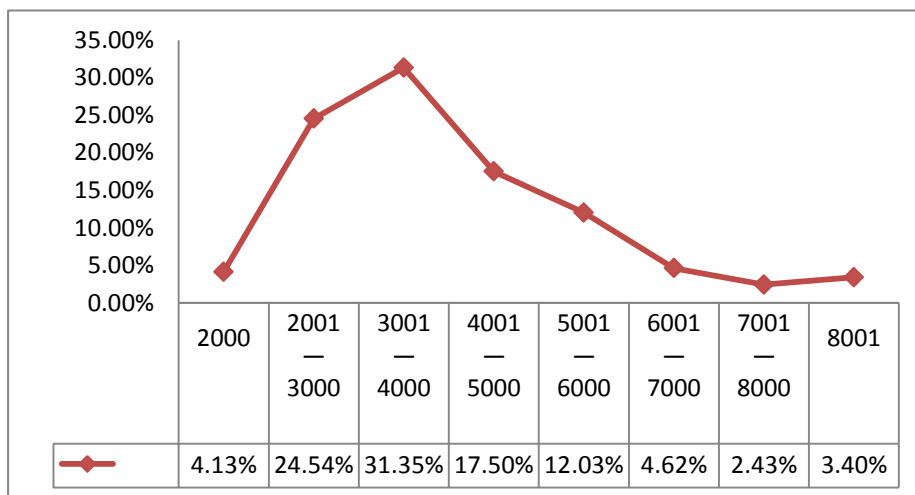


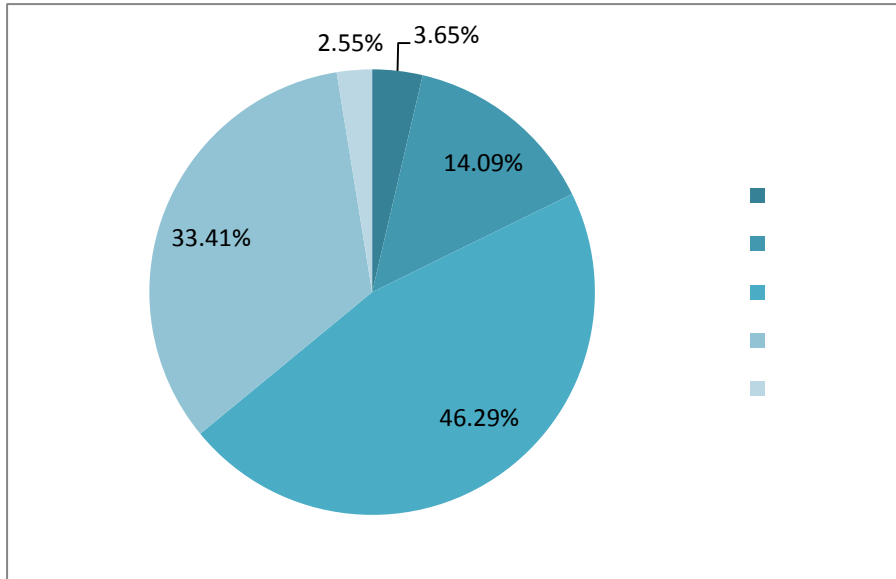
1.



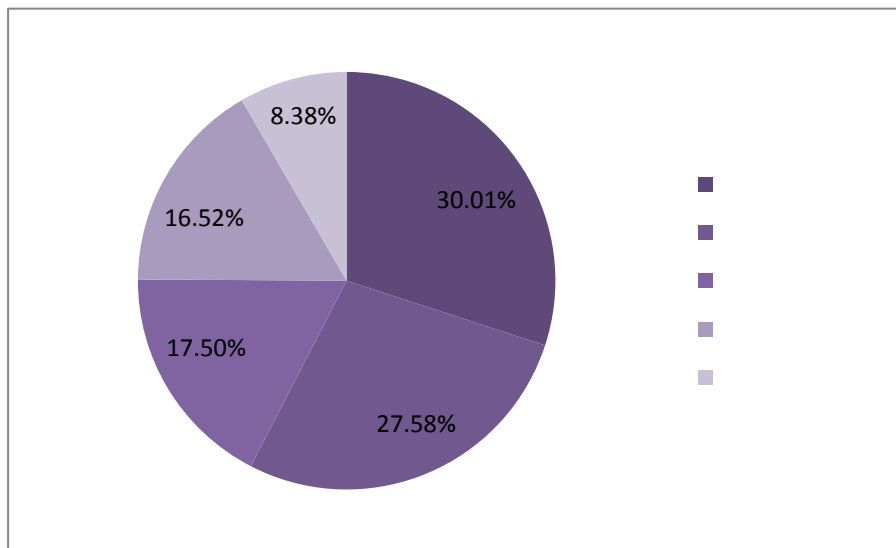


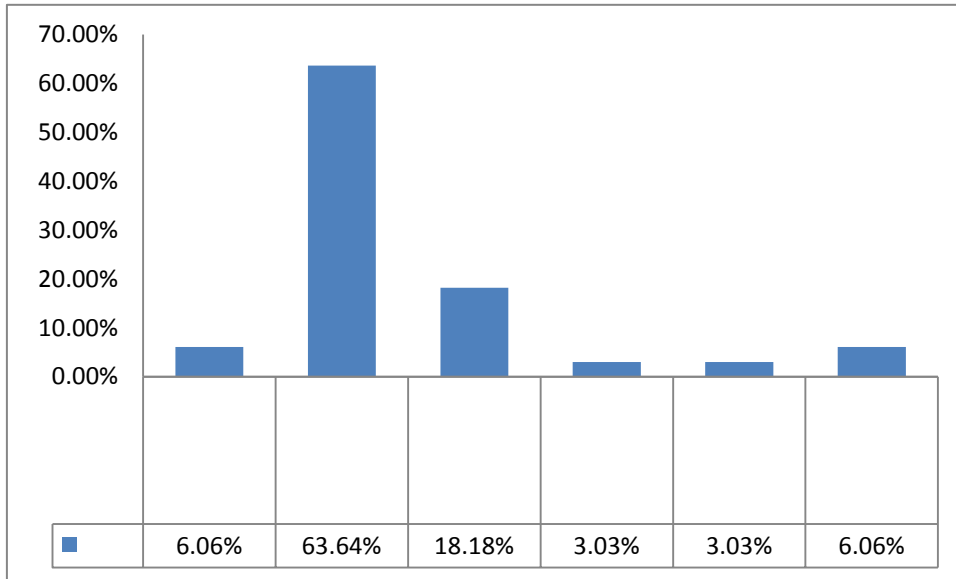
2.



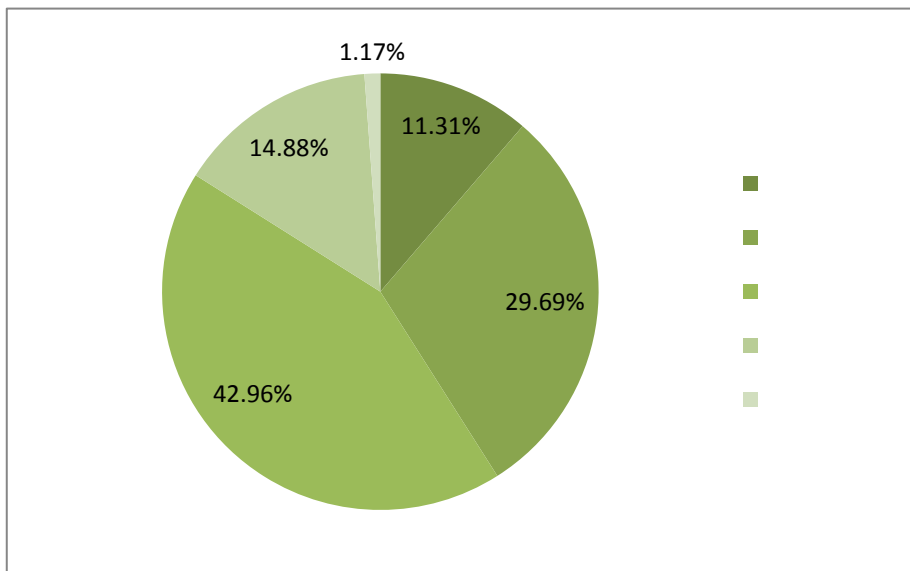


3.

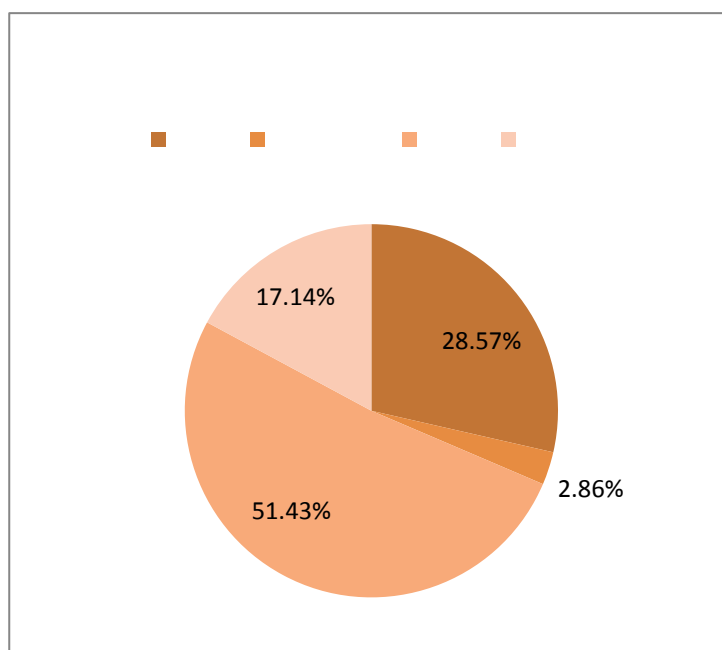
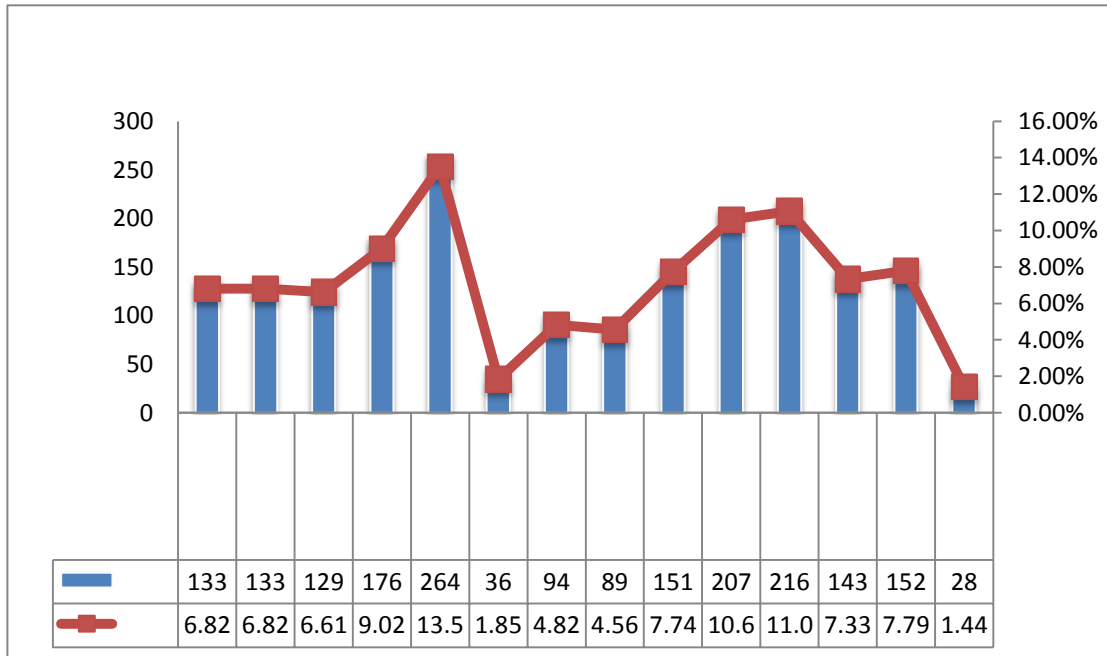




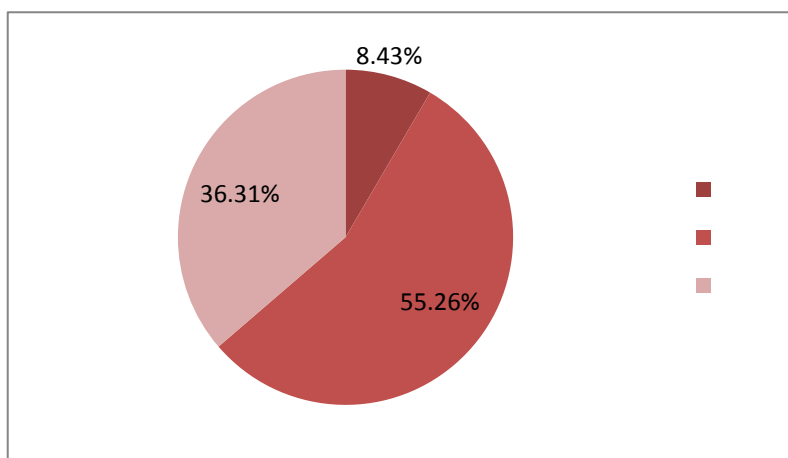
4.



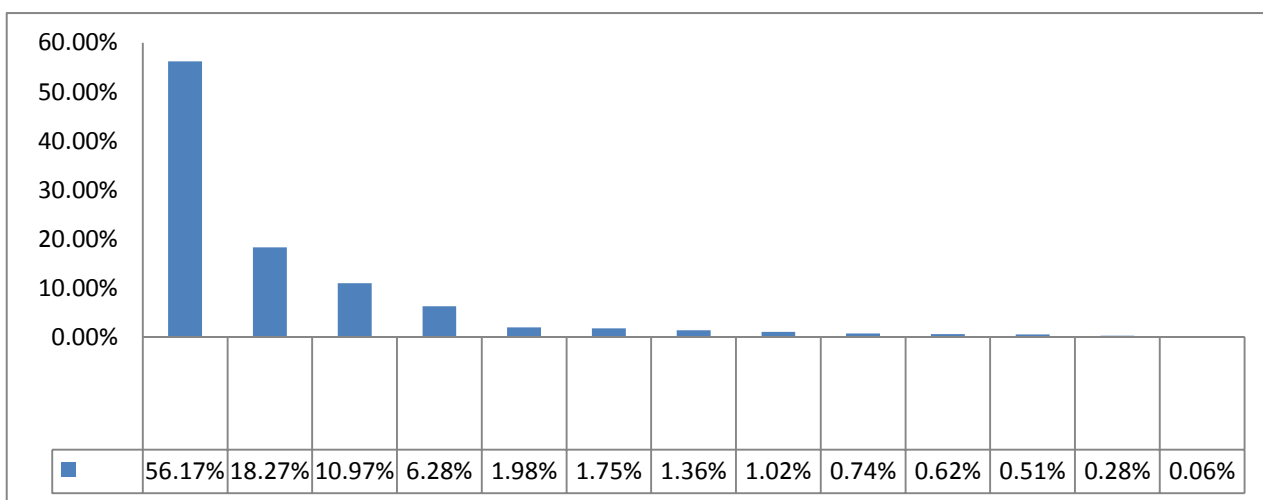




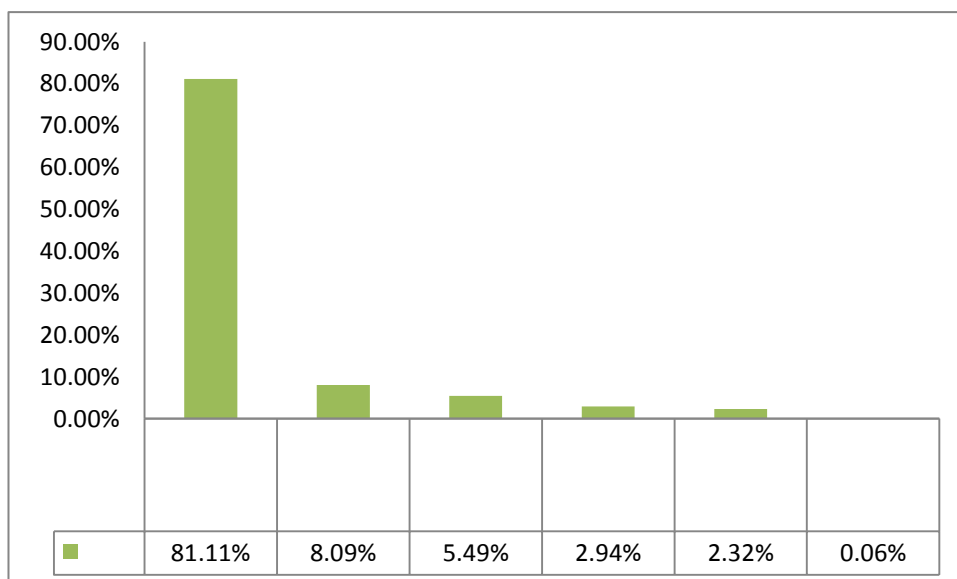
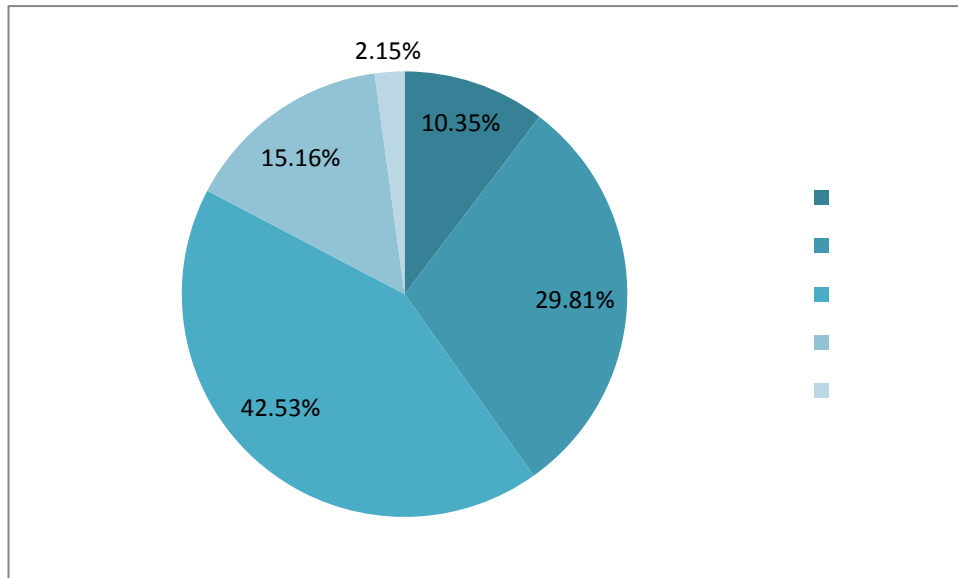
1.

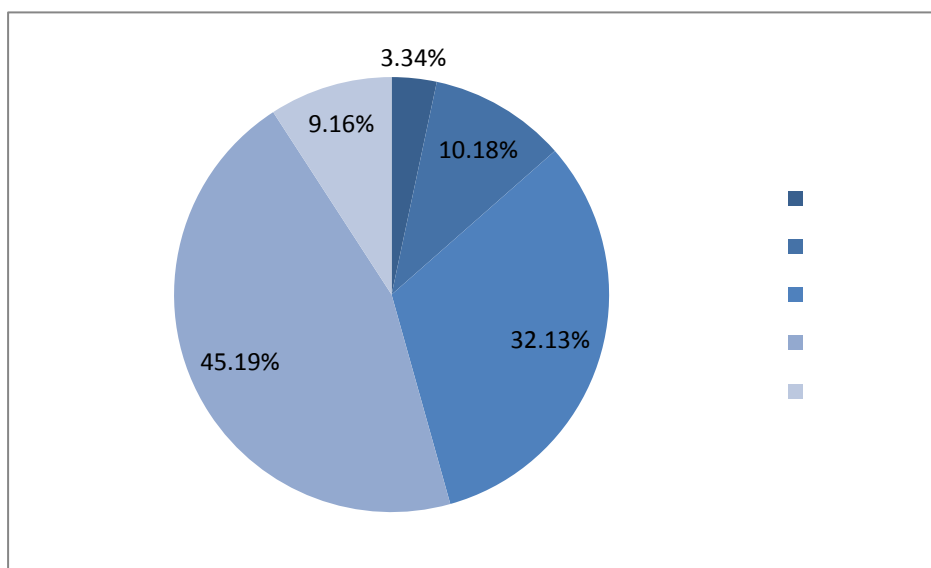
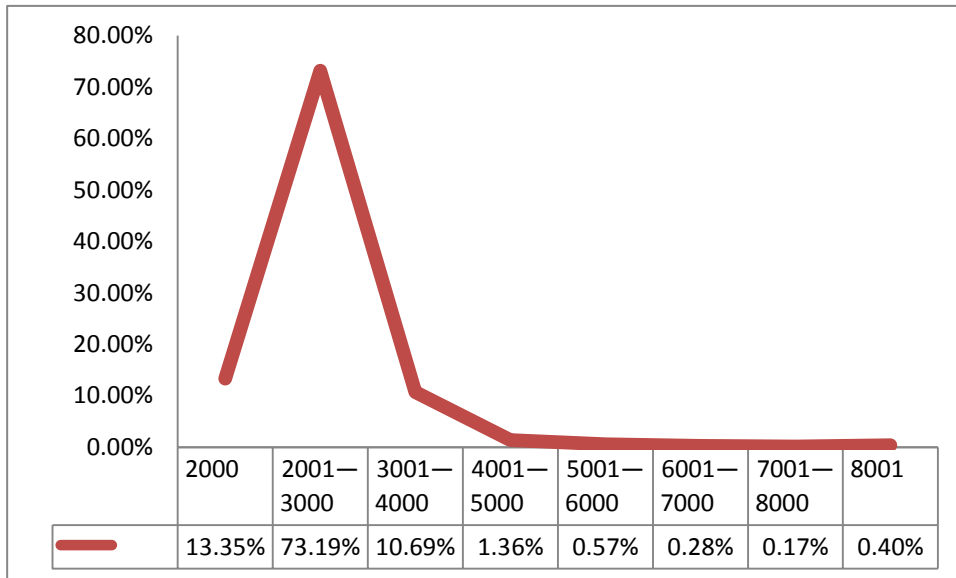


2.



3.





2018-2020

2018	4150	3856	92.92%
2019	3972	3494	87.97%
2020	4039	3369	83.41%

2018-2020

	2018	1170	28.19%	1062	90.77%
	2019	1038	26.13%	831	80.06%
	2020	1053	26.07%	743	70.56%
	2018	1109	26.72%	923	83.23%
	2019	1046	26.33%	777	74.28%
	2020	1000	24.76%	646	64.60%
	2018	1871	45.08%	1871	100.00%
	2019	1888	47.53%	1886	99.89%
	2020	1986	49.17%	1980	99.70%

2018-2020

		2018		2019		2020	
		756	96.69%	774	95.74%	828	94.20%
		438	100.00%	446	100.00%	497	100.00%
		129	100.00%	144	100.00%	151	100.00%
		47	76.60%	50	90.00%	46	91.30%
		97	92.78%	89	82.02%	96	69.79%
		45	84.44%	45	73.33%	38	60.53%
		547	94.88%	576	91.67%	586	88.05%
		286	100.00%	295	99.32%	348	98.85%
		160	99.96%				

		2018		2019		2020	
		27	74.07%	34	73.53%	30	53.33%
		206	89.81%	238	85.71%	256	86.72%
		57	100.00%	76	100.00%	99	100.00%
		41	78.05%	41	82.93%	39	89.74%
		33	93.94%	41	95.12%	36	80.56%
		37	91.89%	41	78.05%	38	76.32%
		37	81.08%	39	58.97%	44	68.18%
		1	100.00%				
		485	81.24%	410	68.78%	400	59.50%
		54	77.78%	48	68.75%	45	64.44%
		51	76.47%	40	90.00%	43	62.79%
		184	86.41%	151	74.17%	140	57.14%
		55	83.64%	41	68.29%	39	66.67%
		141	76.60%	130	56.15%	133	57.14%
		351	97.72%	323	95.05%	292	83.56%
		114	100.00%	104	100.00%	105	100.00%
		147	95.92%	129	88.37%	99	67.68%
		51	98.04%	46	97.83%	42	76.19%
		37	97.3%	43	100%	46	86.96%
		2	100.00%	1	100.00%		
		442	88.46%	427	78.22%	411	70.80%
		106	100.00%	111	100.00%	100	100.00%
		49	79.59%	48	58.33%	68	50.00%
		115	91.30%	88	67.05%	70	54.29%
		120	80.00%	98	78.57%	73	67.12%
				39	82.05%		

" "

'

;
/
2020

" "

" "

QQ

" "

" "

38 2

()

44

2020

36

10 23-25

TTT2

35

"

"

"

"

"

"

4008

"

+

"

QQ

2020 4 1

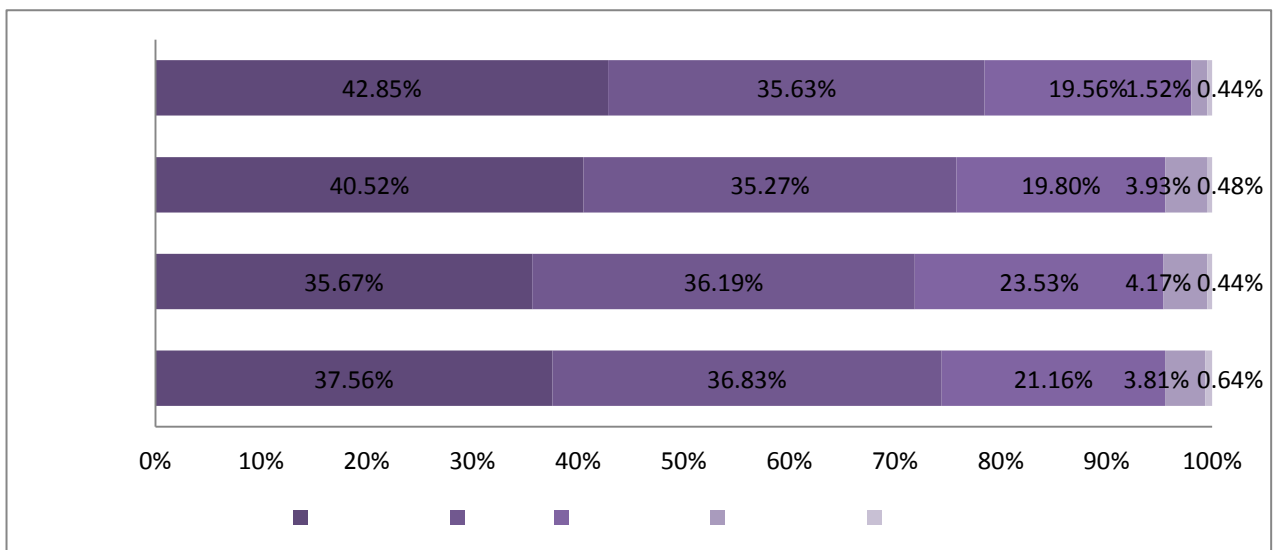
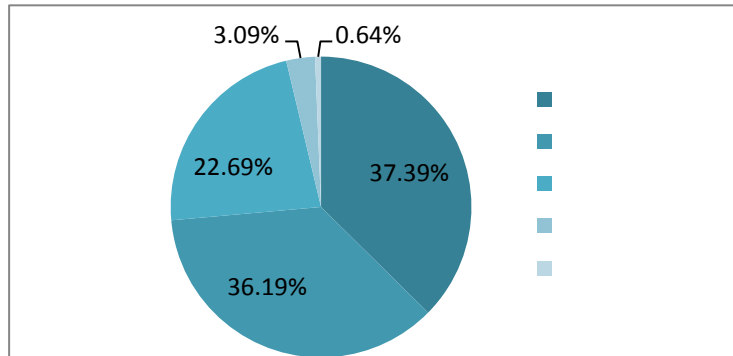
"

"

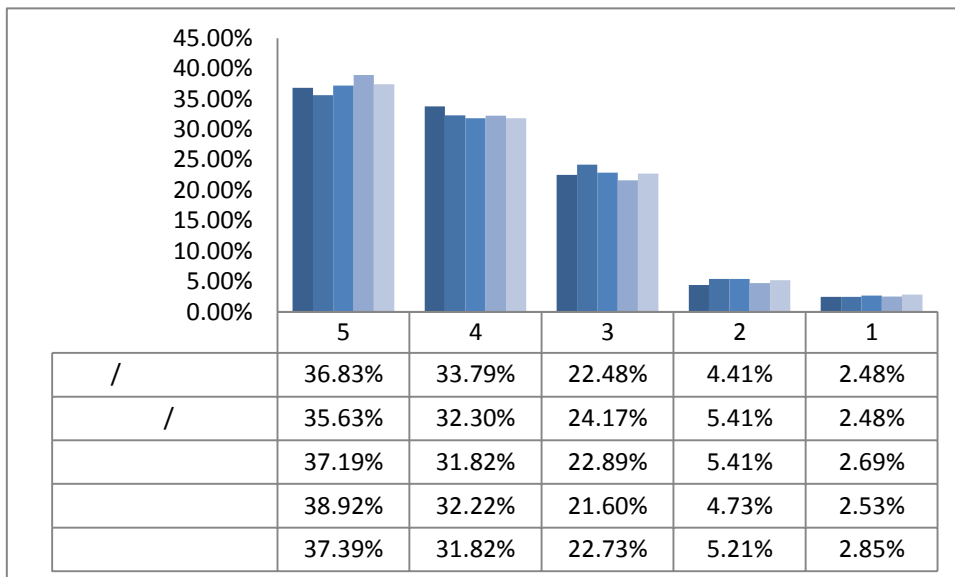
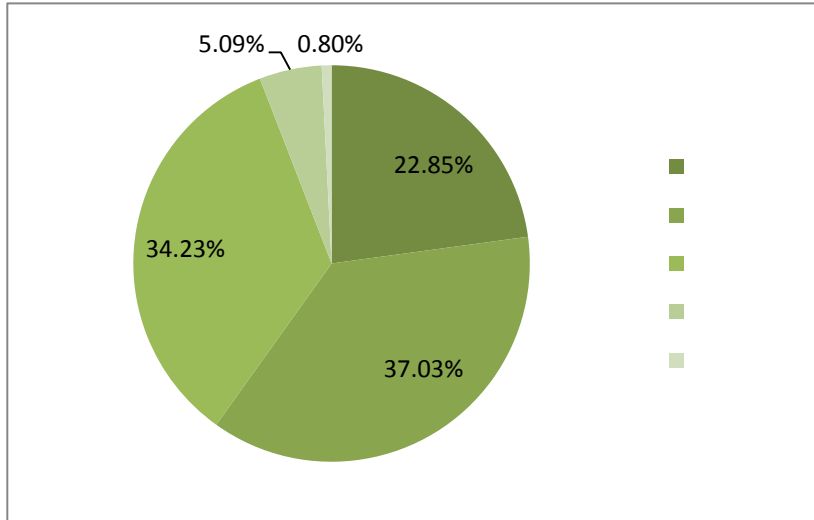
2013



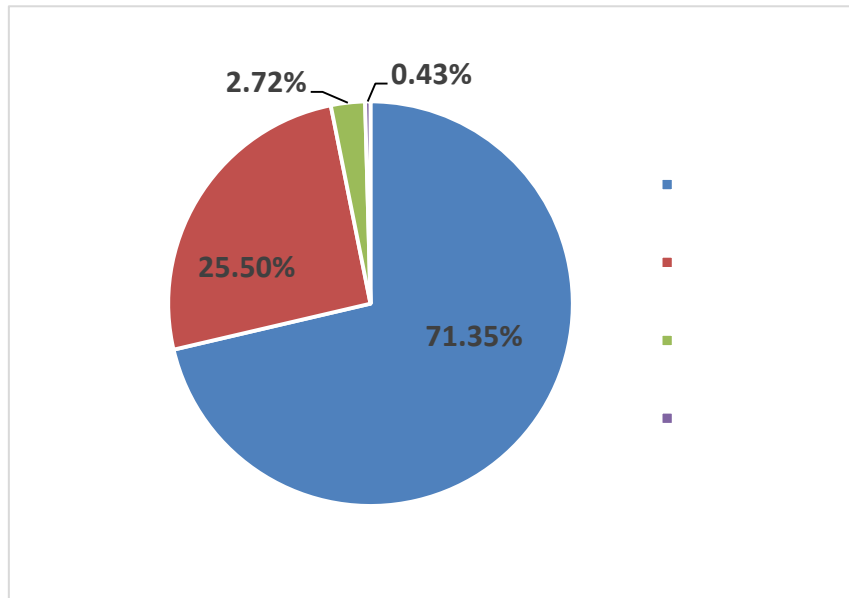
1.



2.

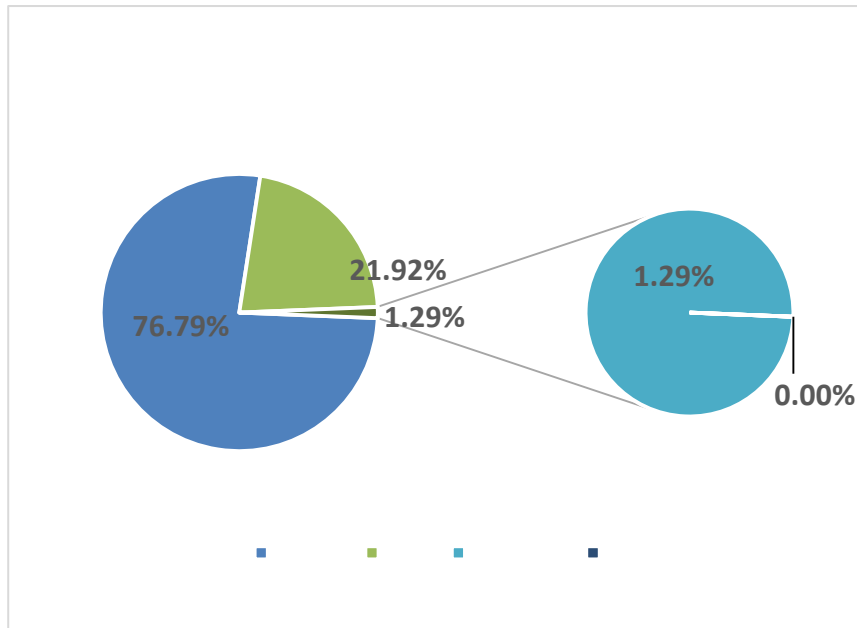


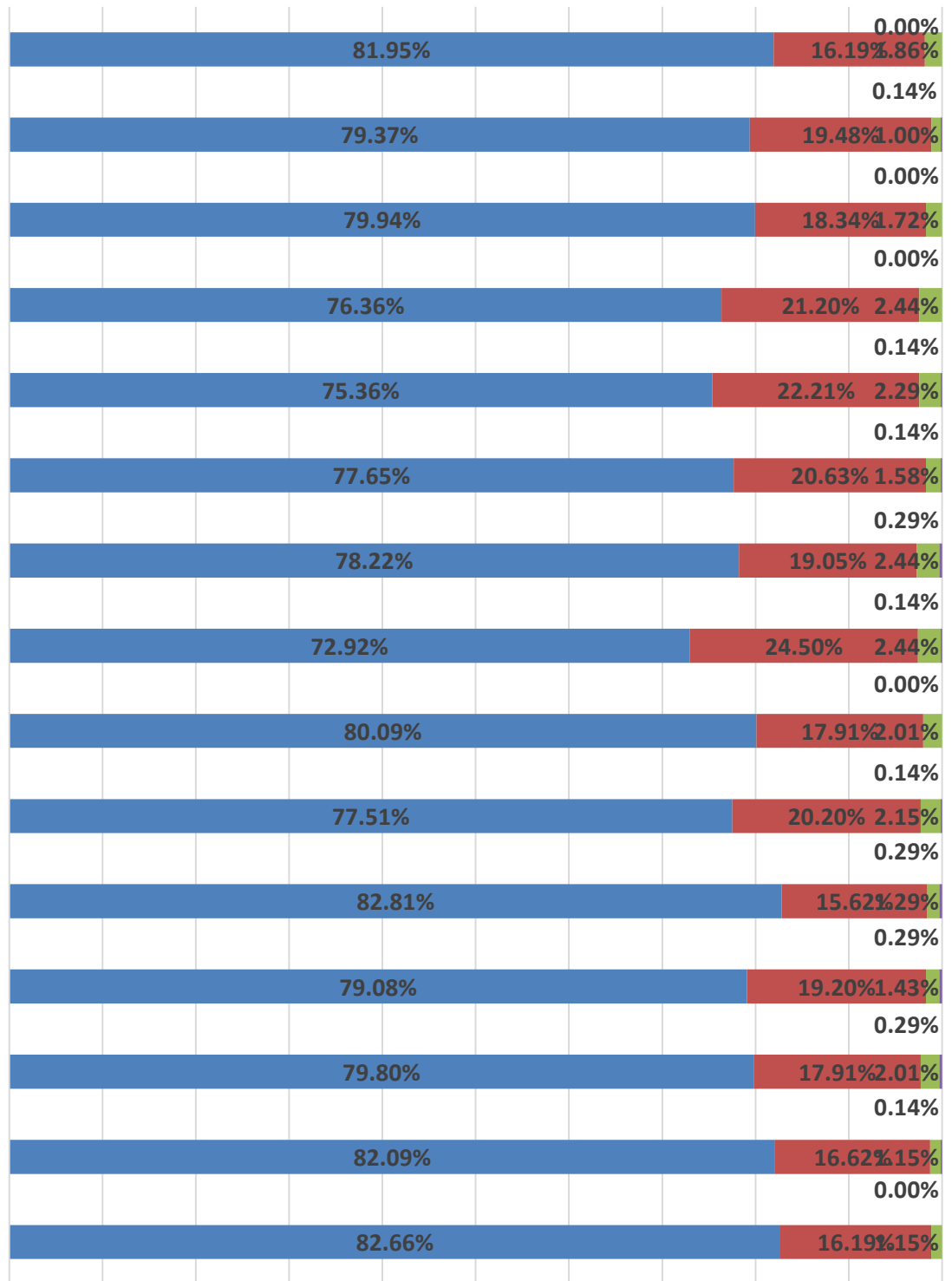
1.



2.

2020





■	82.66%	82.09%	79.80%	79.08%	82.81%	77.51%	80.09%	72.92%	78.22%	77.65%	75.36%	76.36%	79.94%	79.37%	81.95%
■															



要做人民的先生
先做人民的學生
江泽民

湖南第一师范学院招生就业处

地址：湖南省长沙市岳麓区枫林三路1015号

电话：0731-88228176 88228196

传真：0731-88228169

网址：<http://hnfnu.bibibi.net/>

邮编：410205